

HCV Long Term Plan Engagement Event

Mental Health Programme



Humber, Coast and Vale

Our Successes

Established Mental Health Partnership Board and MOU in place

Secured funding for the expansion of Individual Placement Support services

Developing New Models of Care for Forensic Pathways

Secured funding to implement the HCV Suicide Prevention strategy

Significantly reduced out of area acute inpatient placements

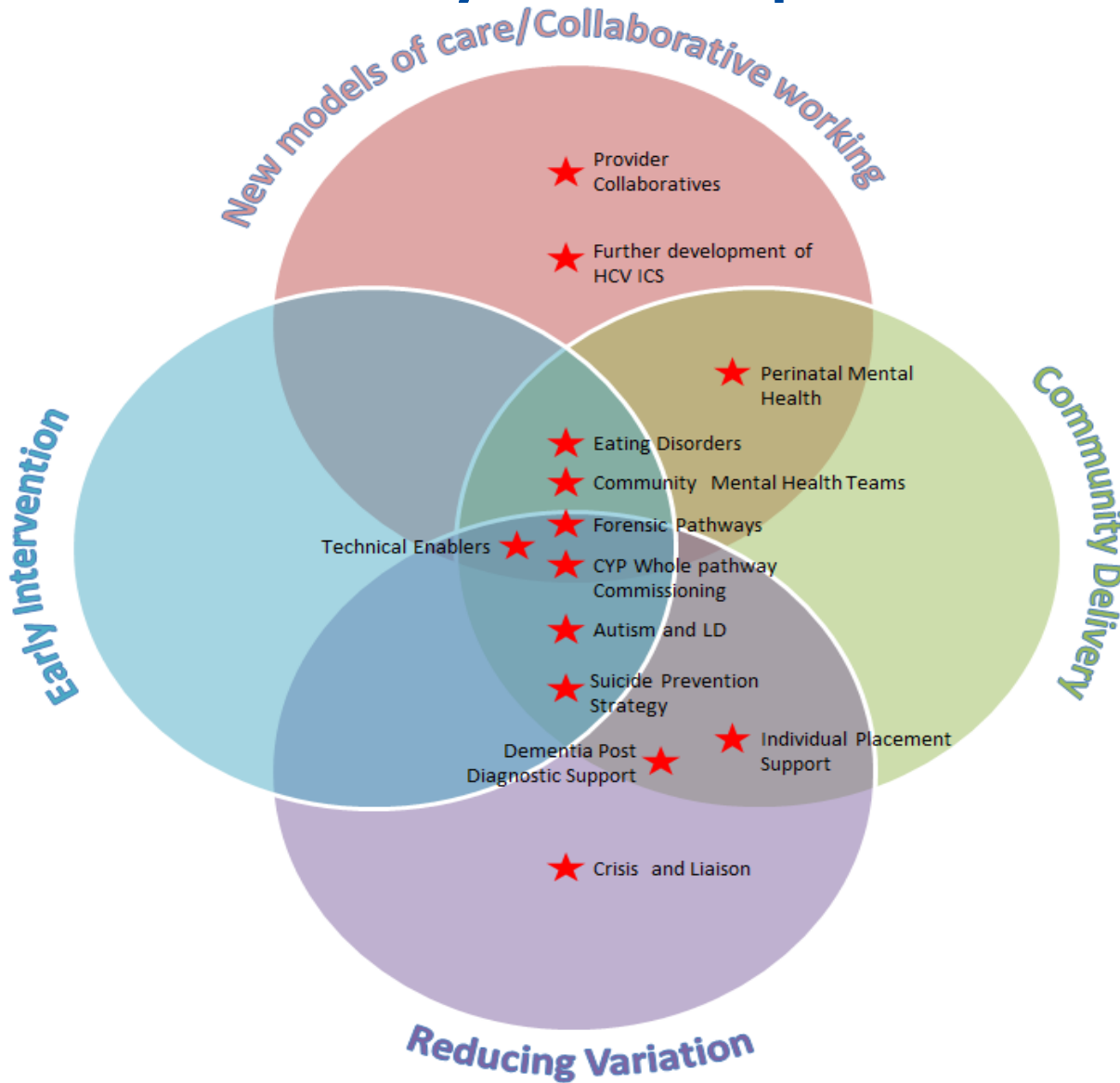
Secured monies to support delivery of mental health services throughout the winter period

Implemented Specialist Community Perinatal Mental Health Services across the HCV footprint

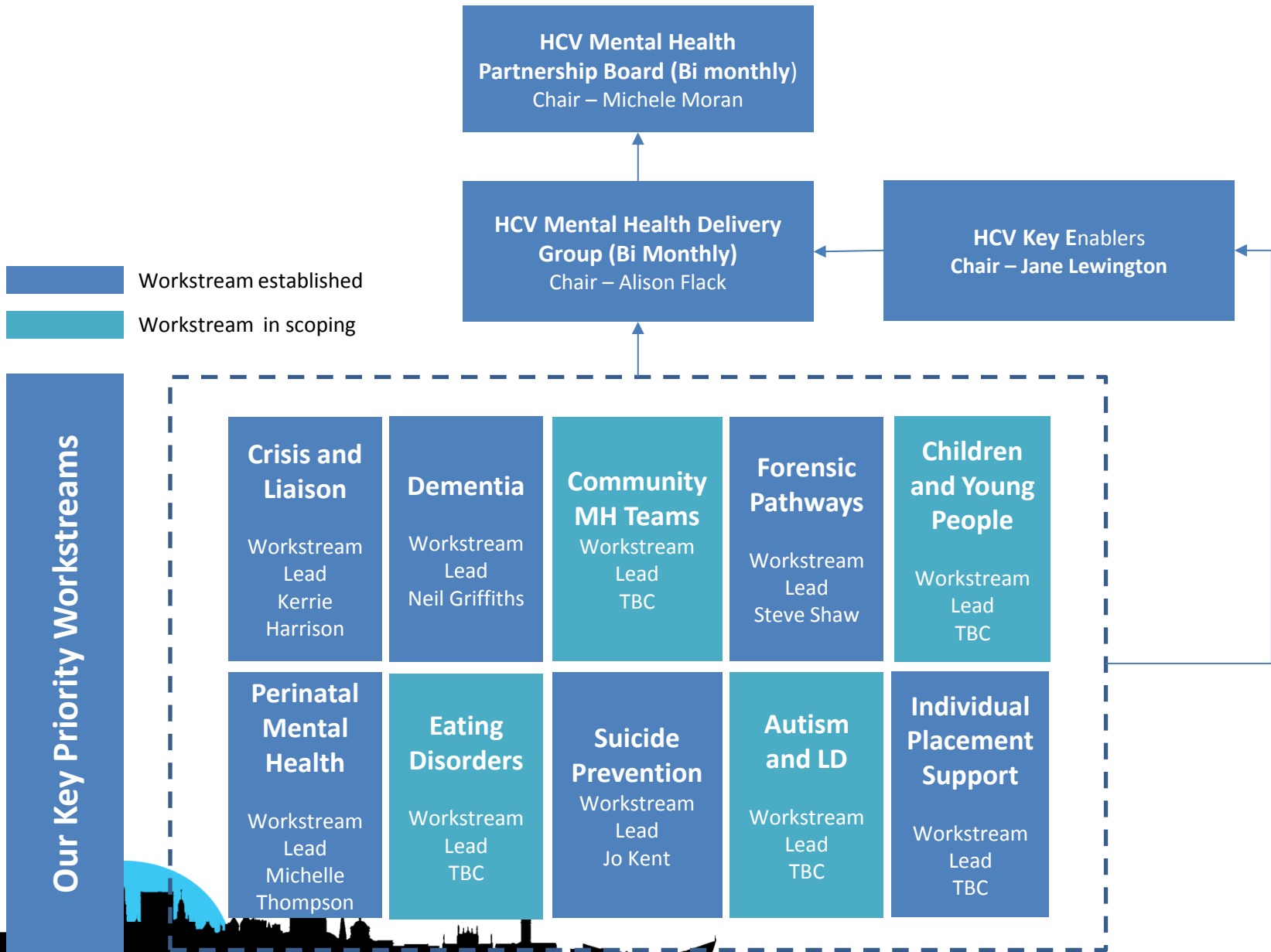
Submitted application to be national pilot site for CYP commissioning



Key Principles



HCV Mental Health Programme Governance



10 Key Priorities – 2019/20 & Beyond

1. Autism & LD (working closely with TCP's)

- Review over prescribing of psychotropic medication
- Autism diagnosis for CYP to be included alongside MH services

2. Children & Young People's Mental Health

- Implement whole pathway approach

3. Community Mental Health Teams

- Integration of community mental health services with primary care and wider community care, such as social services, housing agencies and voluntary organisations.
- Dissolve barriers between primary and secondary care, and between health care, social care and VCS services
- Step up and step down care for people with increasing complexity and more specialist needs, and vice versa
- Know our communities and use this knowledge to understand and address inequalities
- Understand and take a partnership approach to addressing the social determinants of serious mental ill health

4. Crisis & Liaison

- Expand crisis services and commit to a SPA and timely, universal mental health crisis care for everyone
- Ambulance staff will be trained and equipped to respond effectively to people in crisis



10 Key Priorities – 2019/20 & Beyond

continued

5. Dementia

- Improve the care provided at home and in the community for people with dementia or delirium
- Extend the range of support available post diagnosis

6. Forensic Pathways

- More people will receive personalised care closer to home – reducing preventable admissions

7. Individual Placement Support

- Ensuring full coverage across the footprint to IPS

8. Perinatal Mental Health

- Increase access to specialist community perinatal services and extend to 24 months post-partum
- Expand psychological therapies & provide specialist assessment to partners

9. Provider Collaborative

- Develop provider collaborative to take responsibility for specialised mental health, learning disability and autism services across the HCV footprint

10. Specialist Eating Disorders

- Ensure that people with an eating disorder receive timely and specialist intervention which meets the needs of both their mental and physical health

11. Suicide Prevention

- Embed real time surveillance
- Suicide prevention media campaign with a focus on men
- Training and awareness



Engagement

Service users



Families and Carers



Voluntary and 3rd sector



Emergency Services



Schools/colleges



Commissioners,
Providers and Clinicians



- Feedback/discussion
- Priority setting

