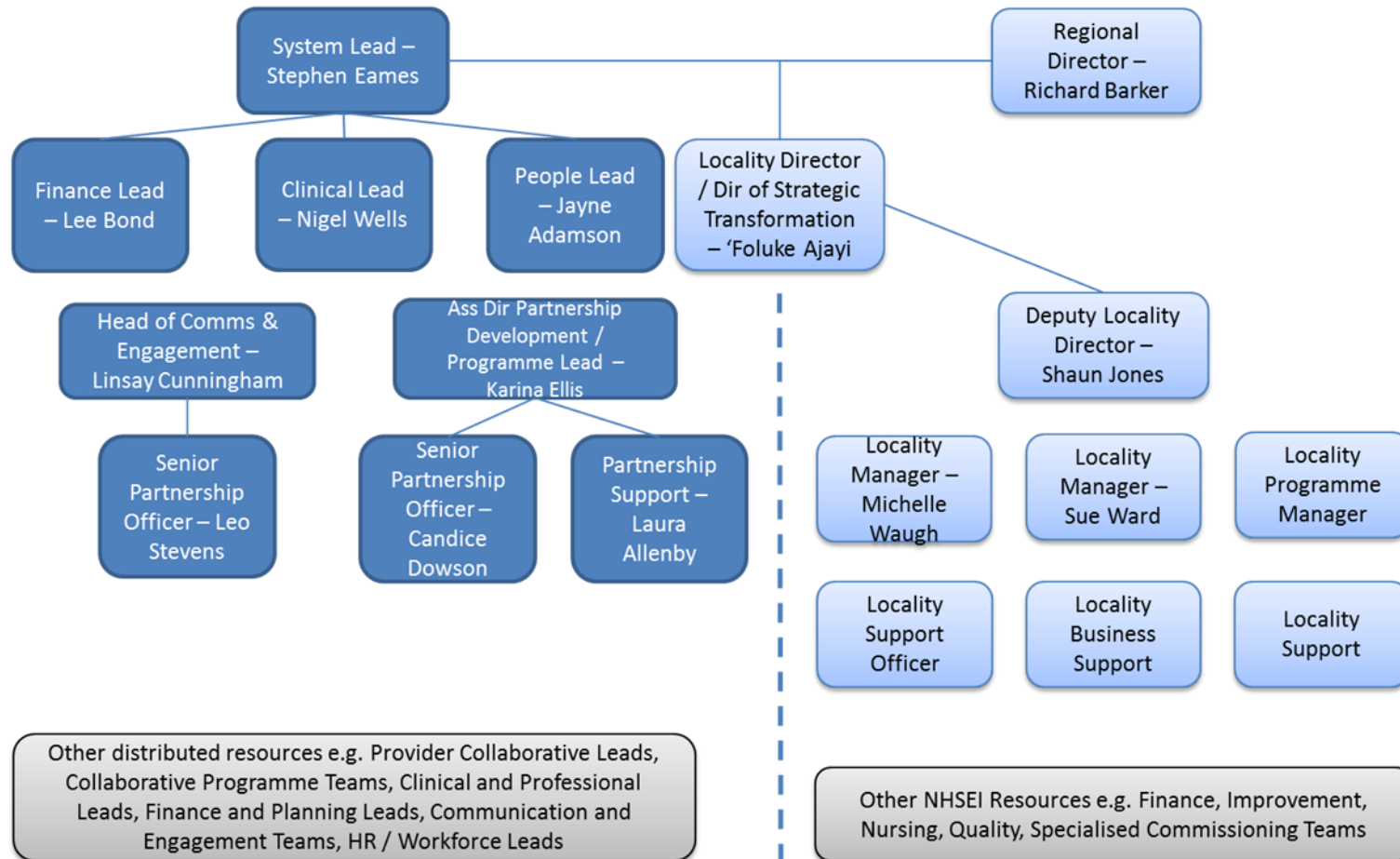




## Humber, Coast and Vale Health and Care Partnership

### Our Partnership Team (updated July 2020)





## Partnership Distributed Leadership Arrangements

Places		
<b>East Riding</b>		John Skidmore
<b>Hull</b>		Matt Jukes / Erica Daley
<b>North East Lincolnshire</b>		Jane Lewington / Jane Miller
<b>North Lincolnshire</b>		Denise Hyde / Emma Latimer
<b>North Yorkshire</b>		Amanda Bloor
<b>York</b>		Phil Mettam / Simon Morritt
Geographical Partnerships		
<b>Humber Health and Care Partnership</b>		Emma Latimer
<b>North Yorkshire and York Partnership</b>		Amanda Bloor
Provider Collaboratives		
<b>Acute</b>		Chris Long
<b>Community Health and Care</b>		Andrew Burnell
<b>Mental Health</b>		Michele Moran
Strategic Priority Areas		
<b>Humber Acute Services Review</b>		Emma Latimer
<b>Scarborough Acute Services Review</b>		Simon Morritt
<b>Population Health / Prevention</b>		Stephen Pintus / Andrew Burnell
<b>Quality</b>		Paula South
Clinical Programmes		
<b>Cancer</b>	Senior Responsible Officer (SRO)	Phil Mettam
	Clinical Lead	Stuart Baugh
	Managing Director	Yvonne Elliott
<b>Mental Health</b>	Executive sponsor/SRO	Michele Moran
	Clinical Lead	Stella Morris / Steve Wright
	Programme Director	Alison Flack
<b>Unplanned / Urgent &amp; Emergency Care including Stroke Network</b>	Chair/Clinical Lead	Andrew Phillips
	SRO	Helen Kenyon
	Programme Director	Sue Rogerson
<b>Planned / Elective Care incl. Diabetes, Diagnostics and Respiratory Networks</b>	SRO	Alex Seale
	Clinical Lead	Several aligned to workstreams
	Programme Director	Caroline Briggs



<b>Primary Care</b>	SRO Lead	Amanda Bloor
	Clinical Lead	Dan Roper
	Programme Director	Geoff Day
<b>Maternity</b>	SRO	Beverley Geary
	Clinical Lead	Kevin Philips
	Deputy SRO	Sarah Smyth
	Programme Lead	Becky Case
<b>Strategic Resourcing Boards</b>		
<b>Strategic Digital Board</b>	Chair	John Skidmore
	Humber Lead	John Mitchell
	York and North Yorkshire Lead	Debbie Westmorland
<b>Estates and Capital Investment Board</b>	Chair	Simon Morrirt
	Programme Lead	Chris O'Neill
<b>Workforce Board</b>	Chair	Rob Walsh
	People Lead	Jayne Adamson
<b>Other</b>		
<b>SRO for Antimicrobial resistance</b>		Beverley Geary
<b>EU Exit Preparation Lead</b>		Peter Reading
<b>Test and Trace Lead</b>		Phil Mettam
<b>PPE Lead</b>		Peter Reading

For further information or contact details, please contact the Partnership Office:

[hullccg.hcvstppmo@nhs.net](mailto:hullccg.hcvstppmo@nhs.net)